

**The Level Platforms Developer Program supports developers, fosters innovation and champions new technology integrations**

The Level Platforms Developer Program is for:

- **Independent Software Vendors (ISVs)** who want to integrate their software with Managed Workplace
- **Level Platforms Partners** who want to integrate their own service delivery software with Managed Workplace
- **Collaborative Service Delivery Partners** who want to offer their remote services to other Level Platforms Partners

The Level Platforms Developer Program provides access to development resources, dedicated support services and ongoing marketing assistance so that participants can successfully develop joint revenue opportunities, enhance or optimize service offerings, and provide greater value to solution providers.

Fig. 1 below shows an example of how one Collaborative Service Provider used our API to develop a successful Web Services Adaptor application. Experience working with or integrating C# and ASP.NET technologies is essential.

For more information: [developerprogram@levelplatforms.com](mailto:developerprogram@levelplatforms.com)

#### DEVELOPMENT RESOURCES

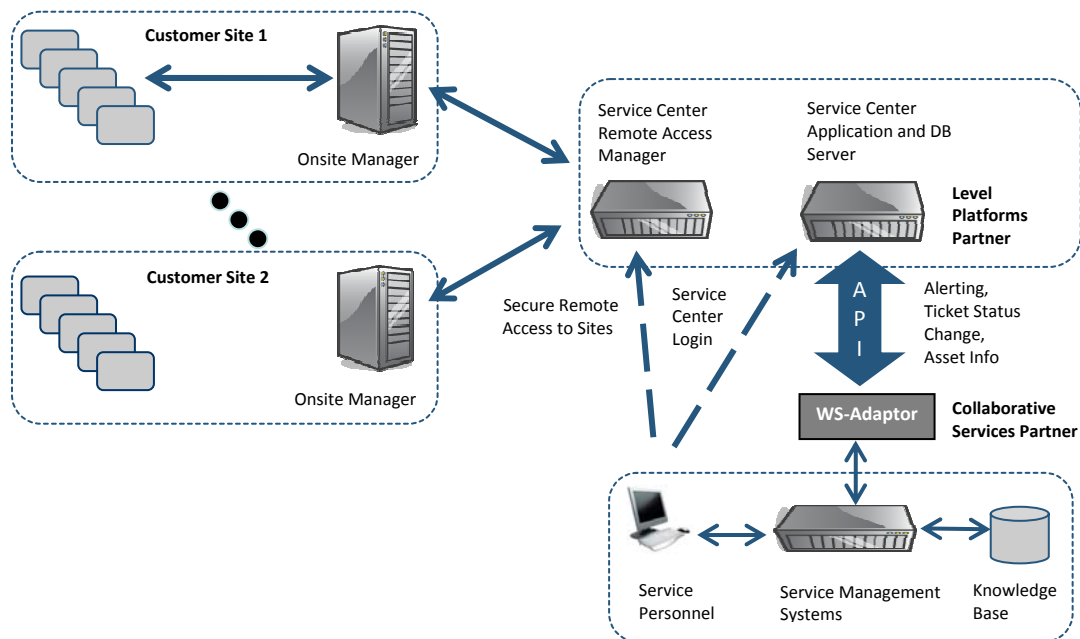
The Software Development Kit (SDK) consists of documentation, .NET code for the API that is compatible with MS Visual Studio, and sample open-source code in C# for a working Web Services Adaptor application. Two test system licenses (one Onsite Manager and one Service Center) are provided for development and testing.

#### MARKETING ASSISTANCE

Program participants have the opportunity to highlight and market their integration through case studies, press releases, as well as receive ongoing support and visibility from Level Platforms. As part of the program, participants will also receive access to the Level Platforms Partner Portal which includes valuable resources, such as whitepapers, case studies, technical documentation, and industry reports.

#### DEDICATED SUPPORT SERVICES

The Developer Program's technical support includes code-level assistance; technical support on test system setup, configuration, and non-API use of Service Center and Onsite Manager; and access to a private API Developer Forum moderated by Level Platforms.



**Fig. 1 - Sample use of the API by a Collaborative Service Provider**